



Sample Portfolio Evaluation Report

November 03, 2021

Prepared by:

Varun Fatehpuria - Founder

Daulat

Comments

This report consists of the following sections:

a. Portfolio Snapshot - This section will have details on your asset allocation, geographic exposure, trailing returns, time period return (best and worst-performing period), sector allocation against the benchmark, investment style etc.

b. Correlation Matrix - A correlation of 1 indicates the two holdings move in the same direction, a correlation of -1 indicates the two holdings move in opposite directions and a correlation of 0 means that no correlation could be found. A correlation of -1 will offer maximum diversification.

c. Portfolio Rolling Returns - Rolling returns are average annualised returns taken for a specified period on any chosen frequency like daily/weekly/monthly and till the last day of the chosen duration. They provide a more accurate and consistent picture of a fund/portfolio's performance.

For example, if you have a five-year investment horizon (holding period) and want to see rolling returns of a mutual fund scheme from 1/1/2006 to 1/1/2016, you start by calculating the annualised return from 1/1/2006 to 1/1/2011 (change in NAV between 1/1/2006 to 1/1/2011, annualised). Next, calculate the annualised return from 2/1/2006 to 2/1/2011, then from 3/1/2006 to 3/1/2011, and so on.

d. Total Annual Return - This section provides the calendar-year return of every fund.

Please note that the above sections are not exhaustive and only indicative. Daulat may at its sole discretion add to/remove them depending on the client's specific requirements.

Portfolio Snapshot

Sample Portfolio Evaluation

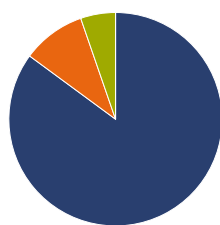
Portfolio Value

₹24,631.22

Benchmark

S&P BSE SENSEX TR INR (INR)

Analysis 10-31-2021



Asset Allocation

- Domestic Equity
- International Equity
- Fixed Income
- Gold
- Cash
- Others

	Portfolio Net %	Bmark Net %
Domestic Equity	85.09	100.00
International Equity	0.00	0.00
Fixed Income	9.62	0.00
Gold	0.00	0.00
Cash	5.29	0.00
Others	0.00	0.00

Morningstar Equity Style Box %

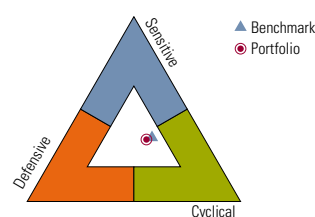
14	48	9	Large	Total Stock Holdings 228 % Not Classified 0
5	10	9		
2	2	1		
			Value Blend Growth	
			0-10 10-25 25-50 >50	

Morningstar Fixed Income Style Box %

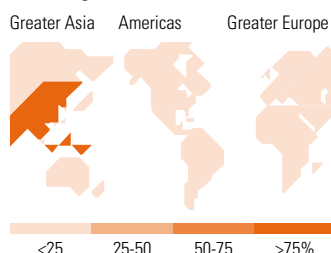
66	34	0	High	Total Bond Holdings 121 % Not Classified 0
0	0	0		
0	0	0		
			Ltd Mod Ext	
			0-10 10-25 25-50 >50	

Stock Analysis 10-31-2021

Stock Sectors



World Regions

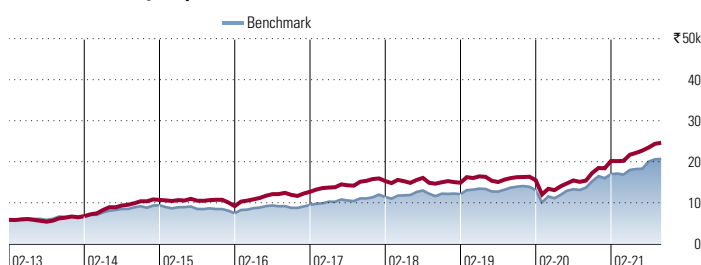


Performance 10-31-2021

Investment Activity Graph

Initial Mkt Val: ₹5,849

Final Mkt Val: ₹24,631



Trailing Returns

	3 Mo	1 Yr	3 Yr	5 Yr	10 Yr
Portfolio Return-Net	8.36	59.87	18.89	14.67	—
Benchmark Return	13.01	51.23	21.24	17.63	—
+/- Benchmark Return-Net	-4.65	8.64	-2.35	-2.96	—

Best/Worst Time Periods

	Best %	Worst %
3 Months	24.03 (Apr 2014-Jun 2014)	-26.18 (Jan 2020-Mar 2020)
1 Year	72.95 (Sep 2013-Aug 2014)	-26.01 (Apr 2019-Mar 2020)
3 Years	30.91 (Sep 2013-Aug 2016)	-3.13 (Apr 2017-Mar 2020)

Portfolio Yield (10-31-2021)

	Yield %
12-Month Yield	0.00

Portfolio-Level Performance Disclosure

The portfolio-level performance shown is hypothetical and for illustrative purposes only. Investor returns will differ from the results shown. The performance data reflects monthly portfolio rebalancing.

	Portfolio (%)	Bmark (%)
Cyclical	47.61	52.50
Basic Matls	6.92	5.02
Consumer Cycl	9.43	5.04
Financial Svs	30.82	42.44
Real Estate	0.44	0.00
Sensitive	33.82	36.18
Commun Svs	3.71	2.52
Energy	6.45	12.45
Industrials	14.30	3.24
Technology	9.36	17.97
Defensive	18.57	11.32
Consumer Def	4.96	7.24
Healthcare	7.80	2.16
Utilities	5.81	1.92
Not Classified	0.00	0.00

	Portfolio (%)	Bmark (%)
Americas	0.00	0.00
North America	0.00	0.00
Latin America	0.00	0.00
Greater Europe	0.00	0.00
United Kingdom	0.00	0.00
Europe-Developed	0.00	0.00
Europe-Emerging	0.00	0.00
Africa/Middle East	0.00	0.00
Greater Asia	100.00	100.00
Japan	0.00	0.00
Australasia	0.00	0.00
Asia-Developed	0.00	0.00
Asia-Emerging	100.00	100.00
Not Classified	0.00	0.00

Holdings 10-31-2021

Top 6 holdings out of 6

SBI Equity Hybrid Fund Dir Gr (INR)
HDFC Capital Builder Value Dir Gr (INR)
HDFC Hybrid Eq Dir Gr (INR)
HDFC Mid-Cap Opportunities Dir Gr (INR)
HDFC Balanced Adv Dir Gr (INR)
HDFC Flexi Cap Dir Gr (INR)

Symbol	Type	Holding Value ₹	% Assets
INF200K01RY0	MF	4,118	16.72
INF179K01VC4	MF	4,117	16.71
INF179K01XZ1	MF	4,116	16.71
INF179K01XQ0	MF	4,115	16.71
INF179K01WA6	MF	4,097	16.63
INF179K01UT0	MF	4,068	16.52

Portfolio Snapshot

Sample Portfolio Evaluation

Portfolio Value

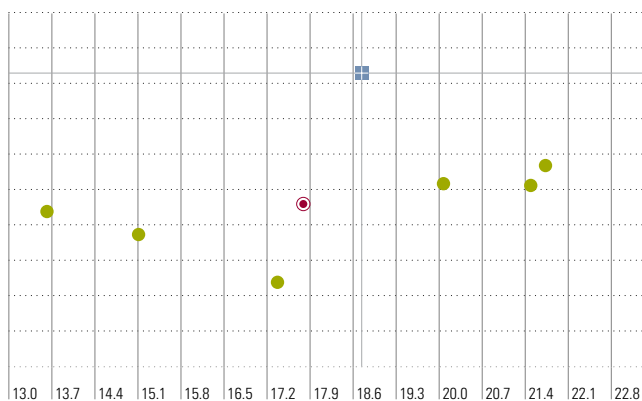
₹24,631.22

Benchmark

S&P BSE SENSEX TR INR (INR)

Risk Analysis 10-31-2021**Risk/Reward Scatterplot**

● Portfolio ● Holdings ■ Bmark 5 Year Mean

**Performance History Graph**

■ Portfolio Net

Quarterly returns +/-
Benchmark in %**Risk and Return Statistics**

	3 Yr		5 Yr		10 Yr	
	Portfolio	Bmark	Portfolio	Bmark	Portfolio	Bmark
Standard Deviation	20.54	21.58	17.79	18.74	—	—
Mean	18.89	21.24	14.67	17.63	—	—
Sharpe Ratio	0.77	0.85	0.59	0.72	—	—

MPT Statistics

	3 Yr Portfolio	5 Yr Portfolio	10 Yr Portfolio
Alpha	-0.57	-1.34	—
Beta	0.90	0.89	—
R-Squared	90.07	87.53	—

Portfolio-Level Performance Disclosure

The portfolio-level performance shown is hypothetical and for illustrative purposes only. Investor returns will differ from the results shown. The performance data reflects monthly portfolio rebalancing.

Fundamental Analysis 10-31-2021**Market Maturity**

	Portfolio	Bmark
% of Stocks	0.00	0.00
Developed Markets	0.00	0.00
Emerging Markets	100.00	100.00
Not Available	0.00	0.00

Geometric Avg Capitalization (₹Mil)

Portfolio	948,038.66
Benchmark	5,048,132.75

Valuation Multiples

	Portfolio	Bmark
Price/Earnings	16.97	27.43
Price/Book	2.57	3.76
Price/Sales	1.87	4.02
Price/Cash Flow	10.25	15.34

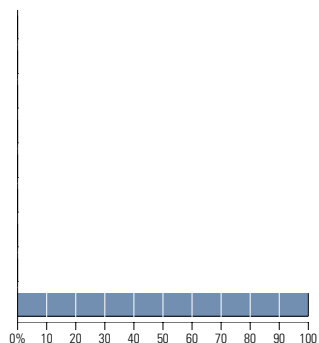
Credit Quality Breakdown

	% of Bonds
AAA	67.27
AA	30.98
A	1.75
BBB	0.00
BB	0.00
B	0.00
Below B	0.00
NR	0.00

Type Weightings

% of Stocks ■ Portfolio ▬ Bmark

High Yield	—	—
Distressed	—	—
Hard Asset	—	—
Cyclical	—	—
Slow Growth	—	—
Classic Growth	—	—
Aggressive Growth	—	—
Speculative Growth	—	—
Not Available	100.00	100.00

**Profitability**

	Portfolio	Bmark
% of Stocks	2021-10	2021-10
Net Margin	15.52	17.56
ROE	—	17.29
ROA	—	8.28
Debt/Capital	32.09	32.47

Fund Statistics

Potential Cap Gains Exposure	—
Avg Net Expense Ratio	1.11

Interest Rate Risk

	Bonds	% Not Available
Avg Eff Maturity	4.12	0.00
Modified Duration	2.64	0.00
Yield to Maturity	5.31	0.00

Portfolio Snapshot

Sample Portfolio Evaluation

Portfolio Value

₹24,631.22

Benchmark

S&P BSE SENSEX TR INR (INR)

Non-Load Adjusted Returns

Total 6 holdings as of 10-31-2021	Symbol	Type	Holdings Date	% of Assets	Holding Value ₹	30-day SEC Yield Subsidized	30-day SEC Yield Unsubsidized	1 Yr Ret %	3 Yr Ret %	5 Yr Ret %	10 Yr Ret %
SBI Equity Hybrid Fund Dir Gr (INR)	INF200K01RY0	MF	09-2021	16.72	4,118	—	—	45.03	19.47	14.50	—
HDFC Capital Builder Value Dir Gr (INR)	INF179K01VC4	MF	09-2021	16.71	4,117	—	—	62.53	18.58	15.13	—
HDFC Hybrid Eq Dir Gr (INR)	INF179K01XZ1	MF	09-2021	16.71	4,116	—	—	50.13	17.95	13.98	—
HDFC Mid-Cap Opportunities Dir Gr (INR)	INF179K01XQ0	MF	09-2021	16.71	4,115	—	—	68.66	22.02	15.54	—
HDFC Balanced Adv Dir Gr (INR)	INF179K01WA6	MF	09-2021	16.63	4,097	—	—	58.45	15.90	12.90	—
HDFC Flexi Cap Dir Gr (INR)	INF179K01UT0	MF	09-2021	16.52	4,068	—	—	75.69	18.38	15.09	—

Performance Disclosure

The performance data quoted represents past performance and does not guarantee future results. The investment return and principal value of an investment will fluctuate; thus an investor's shares, when redeemed, may be worth more or less than their original cost. Current performance may be lower or higher than return data quoted herein. For performance data current to the most recent month-end, please visit <http://advisor.morningstar.com/familyinfo.asp>.

©2021 Morningstar. All Rights Reserved. Unless otherwise provided in a separate agreement, you may use this report only in the country in which its original distributor is based. The information, data, analyses and opinions contained herein (1) include the confidential and proprietary information of Morningstar, (2) may include, or be derived from, account information provided by your financial professional which cannot be verified by Morningstar, (3) may not be copied or redistributed, (4) do not constitute investment advice offered by Morningstar, (5) are provided solely for informational purposes and therefore are not an offer to buy or sell a security, and (6) are not warranted to be correct, complete or accurate. Except as otherwise required by law, Morningstar shall not be responsible for any trading decisions, damages or other losses resulting from, or related to, this information, data, analyses or opinions or their use. Opinions expressed are as of the date written and are subject to change without notice. Investment research is produced and issued by subsidiaries of Morningstar, Inc. including, but not limited to, Morningstar Research Services LLC, registered with and governed by the U.S. Securities and Exchange Commission. This report is supplemental sales literature. If applicable it must be preceded or accompanied by a prospectus, or equivalent, and disclosure statement. Please see important disclosures at the end of this report.



Correlation Matrix 10-31-2016 to 10-31-2021: Sample Portfolio Evaluation

Report Currency

INR

Correlation Matrix 5 Year

1							
1		2					
2	0.97		3				
3	0.98	0.95		4			
4	0.99	0.97	0.97		5		
5	0.96	0.93	0.93	0.94		6	
6	0.97	0.93	0.92	0.97	0.90		7
7	0.98	0.94	0.94	0.97	0.91	0.99	

Investment Key

- 1 Portfolio
- 2 SBI Equity Hybrid Fund Dir Gr (INR)
- 3 HDFC Capital Builder Value Dir Gr (INR)
- 4 HDFC Hybrid Eq Dir Gr (INR)
- 5 HDFC Mid-Cap Opportunities Dir Gr (INR)
- 6 HDFC Balanced Adv Dir Gr (INR)
- 7 HDFC Flexi Cap Dir Gr (INR)

Degree of Correlation

High	Moderate	None	Moderately Negative	Highly Negative
0.70 to 1.00	0.11 to 0.69	0.10 to -0.10	-0.11 to -0.69	-0.70 to -1.00

The Correlation Matrix demonstrates the relationship of return patterns among investments. It is based upon the correlation coefficient, a number between -1.0 and 1.0. A perfect negative linear relationship between two investments has a correlation of -1.0, whereas a perfect positive linear relationship exists with a correlation of 1.0.

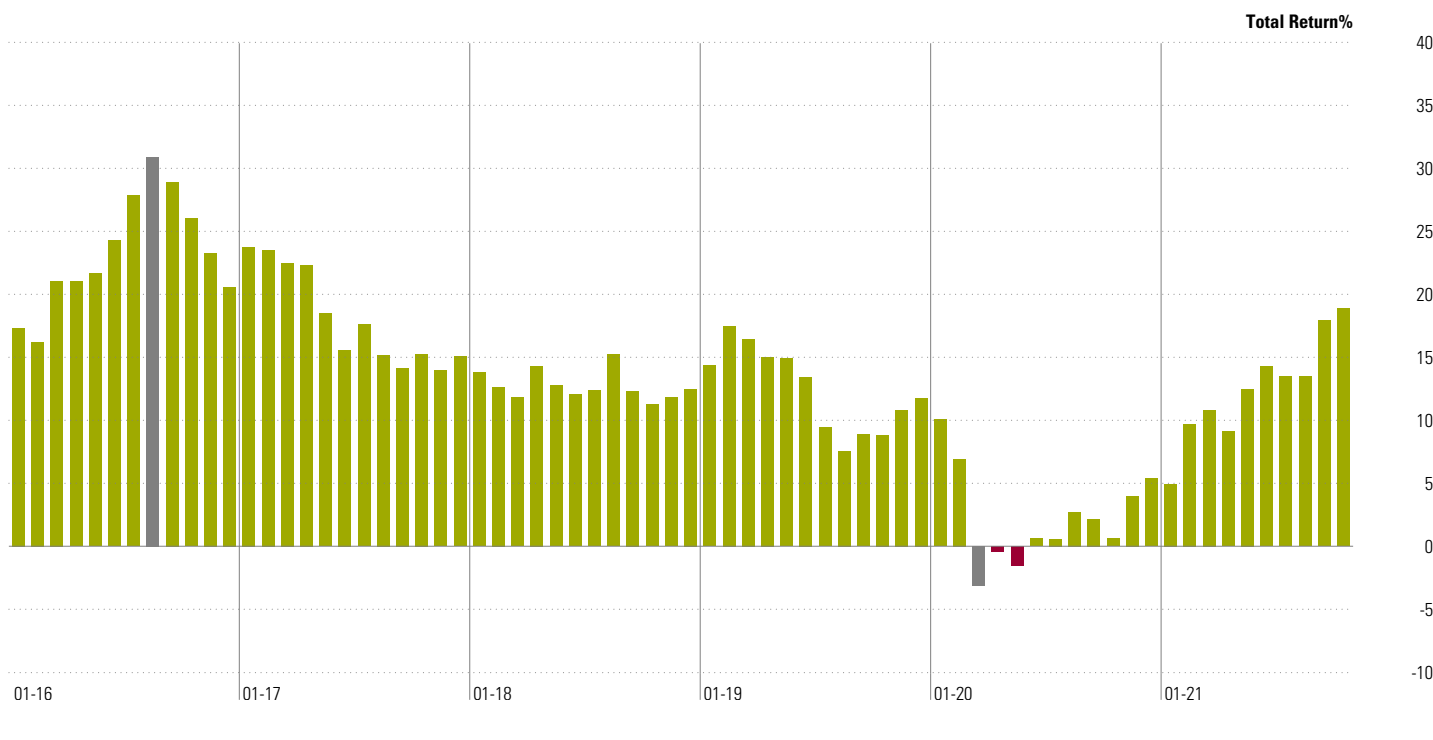
A correlation coefficient of 0.0 indicates no linear relationship between the investments. Correlation information can be valuable in assessing the diversification effect of combining an investment with other investing options.

Portfolio Rolling Returns: Sample Portfolio Evaluation

36 Month Rolling Returns : 01-31-2013 to 10-31-2021

Report Currency
INR

Performance 10-31-2021



	Time Period	Period's Cumulative Total Return %	Period's Annualized Total Return %
Portfolio: Sample Portfolio Evaluation	01-31-2013 to 10-31-2021	295.52	17.02
Highest Historical Return	08-31-2013 to 08-31-2016	124.36	30.91
Lowest Historical return	03-31-2017 to 03-31-2020	-9.09	-3.13

Performance Disclosure

The portfolio-level performance shown is hypothetical and for illustrative purposes only. Investor returns will differ from the results shown. The performance data reflects monthly portfolio rebalancing. The performance data quoted represents past performance and does not guarantee future results. The investment return and principal value of an investment will fluctuate; thus an investor's shares, when redeemed, may be worth more or less than their original cost. Current performance may be lower or higher than return data quoted herein. For performance data current to the most recent month-end, please visit <http://advisor.morningstar.com/familyinfo.asp>.

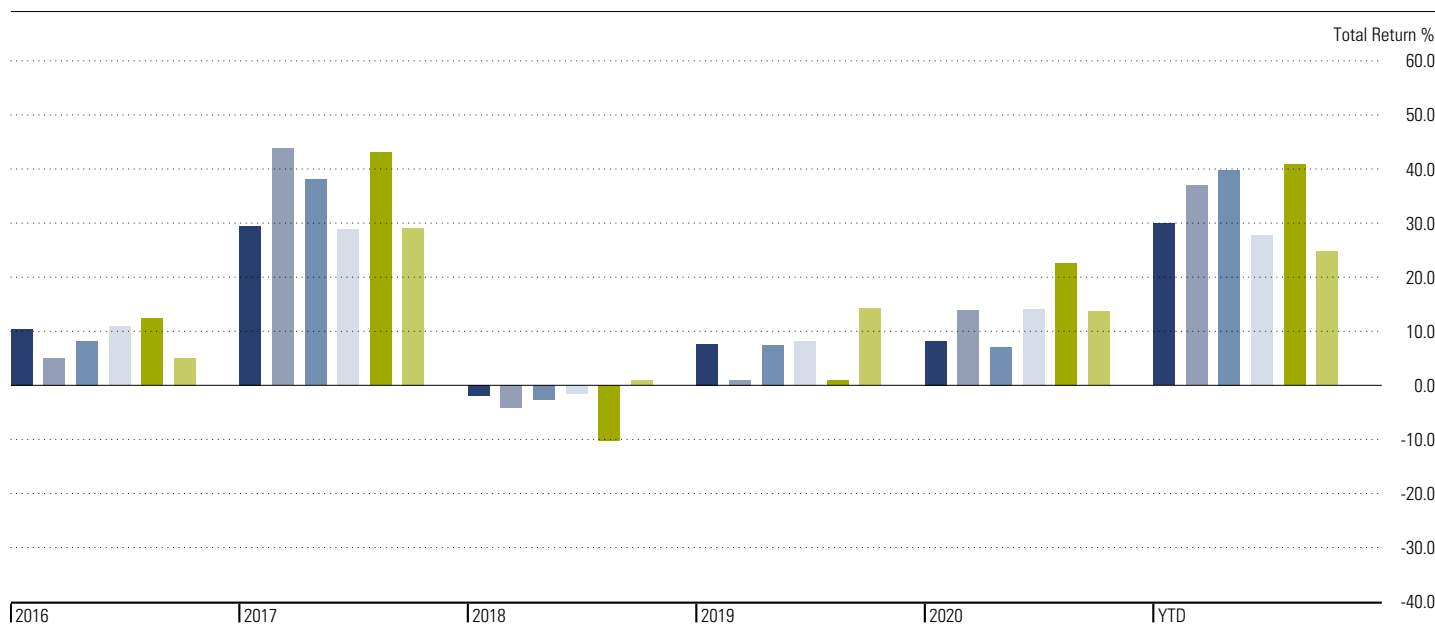
Holdings 10-31-2021

Total: 6 Holdings	Symbol	Type	Holding Value ₹	% Assets
SBI Equity Hybrid Fund Dir Gr (INR)	INF200K01RY0	MF	4,118	16.72
HDFC Capital Builder Value Dir Gr (INR)	INF179K01VC4	MF	4,117	16.71
HDFC Hybrid Eq Dir Gr (INR)	INF179K01XZ1	MF	4,116	16.71
HDFC Mid-Cap Opportunities Dir Gr (INR)	INF179K01XQ0	MF	4,115	16.71
HDFC Balanced Adv Dir Gr (INR)	INF179K01WA6	MF	4,097	16.63
HDFC Flexi Cap Dir Gr (INR)	INF179K01UT0	MF	4,068	16.52

Total Return Sample Portfolio Evaluation

01-01-2016 to 10-31-2021

Currency
INR



Securities	2016	2017	2018	2019	2020	YTD
■ HDFC Balanced Adv Dir Gr (INR)	10.40	29.45	-1.93	7.60	8.20	29.95
■ HDFC Capital Builder Value Dir Gr (INR)	5.00	43.83	-4.21	1.00	13.97	36.93
■ HDFC Flexi Cap Dir Gr (INR)	8.16	38.05	-2.62	7.43	7.05	39.86
■ HDFC Hybrid Eq Dir Gr (INR)	10.95	28.87	-1.61	8.23	14.09	27.85
■ HDFC Mid-Cap Opportunities Dir Gr (INR)	12.39	43.06	-10.20	0.92	22.58	40.85
■ SBI Equity Hybrid Fund Dir Gr (INR)	5.02	29.04	0.89	14.24	13.64	24.76

Performance Disclosure

The performance data quoted represents past performance and does not guarantee future results. The investment return and principal value of an investment will fluctuate; thus an investor's shares, when redeemed, may be worth more or less than their original cost. Current performance may be lower or higher than return data quoted herein. For performance data current to the most recent month-end, please visit <http://advisor.morningstar.com/familyinfo.asp>.